

National Polio Surveillance India data 2000 -2010

NPSP Polio surveillance data on Acute Flaccid Paralysis (AFP) and non-polio AFP and Demographic data

Fig 1. Trends in NPAFP rate with number of OPV doses
All states, 2000-09

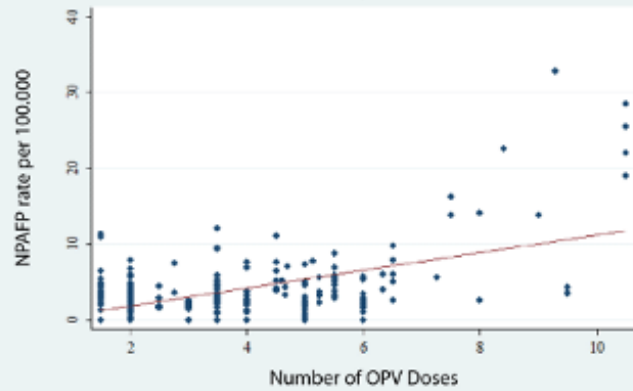


Fig 2. Trends in NPAFP rate with adjusted numbers of OPV doses
All states, 2000-09

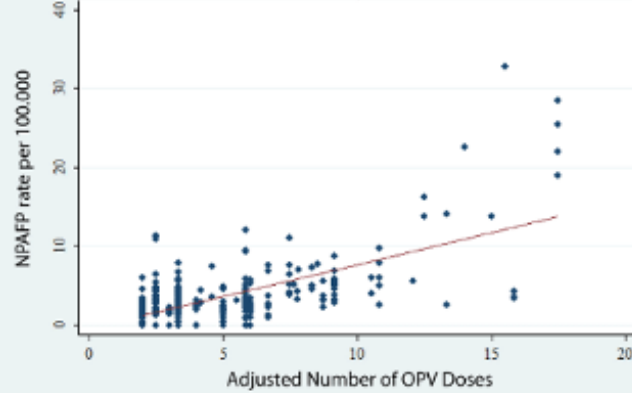


Fig 3. Trends in NPAFP rate with number of OPV doses
Uttar Pradesh and Bihar, 2000-09

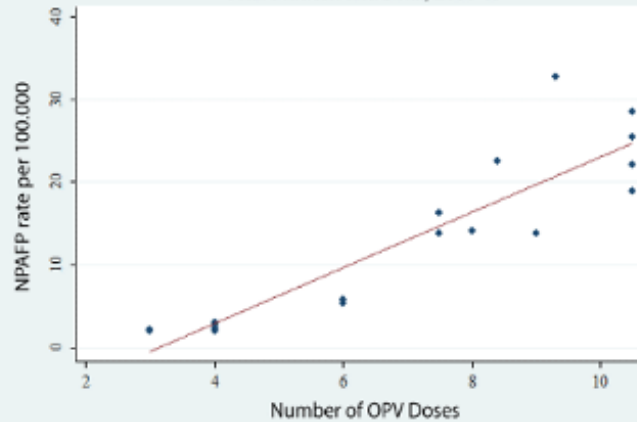
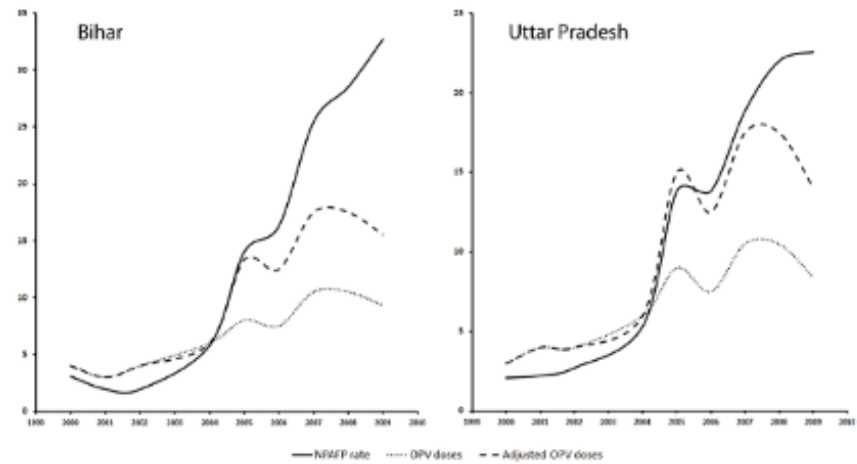


Fig 4. Yearly trends in unadjusted and adjusted OPV doses with NPAFP rates



The non-polio AFP rate increased with increased number of OPV doses during 2000-2009. (R2 = 32.5%; P < 0.001).

When adjusted for the shift in potency with the introduction of monovalent OPV after 2005, the same association became stronger (R2 = 44.8%; P < 0.001).

When the effect of cumulative doses received in the state over the years on the non-polio AFP rate was examined, the non-polio AFP rate in 2009 best correlated to the cumulative doses received in the previous 3 years. Association (R2) of non-polio AFP rate with OPV doses received in 2009 was 41.9%. It increased to 49.6%, when we looked at AFP rate in 2009 related to total doses received in the years 2008 and 2009. Adding up doses received in 2007 to that in 2008 and 2009 further increased the association (R2 = 55.6%). All these correlations were highly significant (P < 0.001).

Source of data

1. The data on AFP, polio and non-polio AFP and number of polio rounds in each state in each year from 2000 to 2009 were from the National Polio Surveillance web site (<http://www.npsindia.org/bulletin.pdf>).

a) Data on numbers of polio rounds during the year 2003 was incomplete.

b) When different areas within a state received different number of doses, the arithmetic mean number of doses was taken as the representative dose for that state.

2. Per capita income was obtained from

Swati Gupta. States Performance in Per capita Income Growth ASSOCHAM ECO PULSE January 2008 [www.assochem.org/arb/aep/states-per-capita-income.doc]

Units quoted are 10 million Indian Rupees

3. Population density of each state and union territory was obtained from

Census of India. "Area and Population". Government of India (2001). [http://www.censusindia.gov.in/Census_And_You/area_and_population.aspx]. Quoted in Wikipedia: List of states and union territories of India by population. http://en.wikipedia.org/wiki/List_of_states_and_union_territories_of_India_by_population

4. Data on female literacy and overall literacy was obtained from the Census of India.

Census of India 2001-- State wise population totals

State	state code	year	polio	afp	afp rate	non polio afp	nonpolio afp_rate	GDP	Percapita gdp	Population	Population Density	Literacy	Female literacy	nid_sia (Polio doses in the year - approximated)	cum_sia (Cumulative Polio doses in the previous 3 years)	MAX PERMISSIBLE NPAFP CASES @2/100,000	EXCESS NPAFP CASES
Andaman & Nicobar	1	1999						1567	0.004399806	356152	43	81	75	4			
Andaman & Nicobar	1	2000	0	2	1.44	2	1.44	1567	0.004399806	356152	43	81	75	2			
Andaman & Nicobar	1	2001	0	1	0.73	0	0	1567	0.004399806	356152	43	81	75	2			
Andaman & Nicobar	1	2002	0	0	0	0	0	1567	0.004399806	356152	43	81	75	2	6		
Andaman & Nicobar	1	2003	0	2	1.46	2	1.46	1567	0.004399806	356152	43	81	75	0	4		
Andaman & Nicobar	1	2004	0	0	0	0	0	1567	0.004399806	356152	43	81	75	5	7		
Andaman & Nicobar	1	2005	0	0	0	0	0	1567	0.004399806	356152	43	81	75	2	7		
Andaman & Nicobar	1	2006	0	3	2.52	2	1.68	1567	0.004399806	356152	43	81	75	2	9		
Andaman & Nicobar	1	2007	0	5	4.1	5	4.1	1567	0.004399806	356152	43	81	75	2	6		
Andaman & Nicobar	1	2008	0	3	2.42	3	2.42	1567	0.004399806	356152	43	81	75	3.5	7.5		
Andaman & Nicobar	1	2009	0	0	0	0	0	1567	0.004399806	356152	43	81	75	1.5	7		
Andaman & Nicobar	1	2010				0	0									0	0
Andhra Pradesh	2	1999						236094	0.003097152	76210007	277	61	51	4.5			
Andhra Pradesh	2	2000	0	373	1.38	365	1.35	236094	0.003097152	76210007	277	61	51	2			
Andhra Pradesh	2	2001	0	342	1.17	332	1.14	236094	0.003097152	76210007	277	61	51	2			
Andhra Pradesh	2	2002	0	371	1.27	369	1.27	236094	0.003097152	76210007	277	61	51	2	6		
Andhra Pradesh	2	2003	19	474	1.58	401	1.34	236094	0.003097152	76210007	277	61	51	2.33	6.33		
Andhra Pradesh	2	2004	1	468	1.55	462	1.53	236094	0.003097152	76210007	277	61	51	6	10.33		
Andhra Pradesh	2	2005	0	740	2.74	738	2.73	236094	0.003097152	76210007	277	61	51	2	10.33		
Andhra Pradesh	2	2006	0	566	2.09	507	1.87	236094	0.003097152	76210007	277	61	51	2	10		

Andhra Pradesh	2	2007	5	777	2.84	767	2.8	236094	0.003097152	76210007	277	61	51	5.5	9.5		
Andhra Pradesh	2	2008	1	756	2.62	753	2.61	236094	0.003097152	76210007	277	61	51	4	11.5		
Andhra Pradesh	2	2009	0	855	3.08	851	3.07	236094	0.003097152	76210007	277	61	51	1.5	11		
Andhra Pradesh	2	2010				998	3.49									571.9	426
Arunachal Pradesh	3	1999						2987	0.00272048	1097968	13	55	44	4			
Arunachal Pradesh	3	2000	0	8	1.86	6	1.39	2987	0.00272048	1097968	13	55	44	2			
Arunachal Pradesh	3	2001	0	6	1.34	6	1.34	2987	0.00272048	1097968	13	55	44	2			
Arunachal Pradesh	3	2002	0	3	0.68	2	0.46	2987	0.00272048	1097968	13	55	44	2	6		
Arunachal Pradesh	3	2003	0	5	1.06	5	1.06	2987	0.00272048	1097968	13	55	44	0	4		
Arunachal Pradesh	3	2004	0	6	1.23	6	1.23	2987	0.00272048	1097968	13	55	44	5	7		
Arunachal Pradesh	3	2005	0	7	1.41	7	1.41	2987	0.00272048	1097968	13	55	44	2	7		
Arunachal Pradesh	3	2006	0	12	2.42	7	1.41	2987	0.00272048	1097968	13	55	44	2	9		
Arunachal Pradesh	3	2007	0	39	7.85	39	7.85	2987	0.00272048	1097968	13	55	44	2	6		
Arunachal Pradesh	3	2008	0	48	9.38	48	9.38	2987	0.00272048	1097968	13	55	44	3.5	7.5		
Arunachal Pradesh	3	2009	0	24	4.55	24	4.55	2987	0.00272048	1097968	13	55	44	1.5	7		
Arunachal Pradesh	3	2010				31	5.51									11.25	20
Assam	4	1999						57543	0.002158764	26655528	340	64	56	6			
Assam	4	2000	0	156	1.46	151	1.42	57543	0.002158764	26655528	340	64	56	2			
Assam	4	2001	1	149	1.43	144	1.39	57543	0.002158764	26655528	340	64	56	2			
Assam	4	2002	0	145	1.29	144	1.28	57543	0.002158764	26655528	340	64	56	2	6		
Assam	4	2003	1	145	1.36	125	1.17	57543	0.002158764	26655528	340	64	56	2	6		
Assam	4	2004	0	190	1.8	196	1.8	57543	0.002158764	26655528	340	64	56	6	10		
Assam	4	2005	0	285	2.57	283	2.55	57543	0.002158764	26655528	340	64	56	2	10		
Assam	4	2006	2	360	3.1	315	2.71	57543	0.002158764	26655528	340	64	56	4	12		
Assam	4	2007	0	536	4.5	535	4.49	57543	0.002158764	26655528	340	64	56	3.5	9.5		
Assam	4	2008	1	475	3.9	470	3.87	57543	0.002158764	26655528	340	64	56	5.5	13		
Assam	4	2009	0	542	4.41	539	4.39	57543	0.002158764	26655528	340	64	56	2.5	11.5		
Assam	4	2010				446	3.53									252.69	193.31
Bihar	5	1999						79682	0.00096004	82998509	881	48	34	6			
Bihar	5	2000	50	1444	3.46	1279	3.07	79682	0.00096004	82998509	881	48	34	4			
Bihar	5	2001	27	711	2.14	646	1.95	79682	0.00096004	82998509	881	48	34	3			
Bihar	5	2002	121	874	2.57	659	1.94	79682	0.00096004	82998509	881	48	34	4	11		
Bihar	5	2003	17	800	2.3	644	1.85	79682	0.00096004	82998509	881	48	34	0	7		
Bihar	5	2004	39	2183	6.15	2059	5.78	79682	0.00096004	82998509	881	48	34	6	10		
Bihar	5	2005	30	5246	14.39	5110	14.02	79682	0.00096004	82998509	881	48	34	8	14		
Bihar	5	2006	57	7087	18.99	6075	16.28	79682	0.00096004	82998509	881	48	34	7.5	21.5		
Bihar	5	2007	503	10387	27.18	9723	25.44	79682	0.00096004	82998509	881	48	34	10.5	26		
Bihar	5	2008	233	11659	29.67	11201	28.51	79682	0.00096004	82998509	881	48	34	10.5	28.5		
Bihar	5	2009	117	13510	33.45	13206	32.7	79682	0.00096004	82998509	881	48	34	9.3	30.3		
Bihar	5	2010				16713	39.15									853.79	15859.21
Chandigarh	6	1999						9872	0.0109611	900635	7900	82	77	4			
Chandigarh	6	2000	1	8	2.49	7	2.18	9872	0.0109611	900635	7900	82	77	3			

Chandigarh	6	2001	0	12	3.36	12	3.36	9872	0.0109611	900635	7900	82	77	2			
Chandigarh	6	2002	1	14	3.77	12	3.23	9872	0.0109611	900635	7900	82	77	2	7		
Chandigarh	6	2003	0	3	0.78	3	0.78	9872	0.0109611	900635	7900	82	77	0	4		
Chandigarh	6	2004	0	12	3	12	3	9872	0.0109611	900635	7900	82	77	5	7		
Chandigarh	6	2005	0	9	2.17	9	2.17	9872	0.0109611	900635	7900	82	77	3	8		
Chandigarh	6	2006	1	19	4.43	16	3.73	9872	0.0109611	900635	7900	82	77	4	12		
Chandigarh	6	2007	0	14	3.16	14	3.16	9872	0.0109611	900635	7900	82	77	3.5	10.5		
Chandigarh	6	2008	0	15	3.28	15	3.28	9872	0.0109611	900635	7900	82	77	5.5	13		
Chandigarh	6	2009	0	24	4.52	24	4.52	9872	0.0109611	900635	7900	82	77	5.5	14.5		
Chandigarh	6	2010				36	6.14									11.72	25
Chhattisgarh	7	1999						51921	0.002492	20833803	154	65	52	6			
Chhattisgarh	7	2000	0	0	0	0	0	51921	0.002492	20833803	154	65	52	3			
Chhattisgarh	7	2001	0	127	1.43	124	1.4	51921	0.002492	20833803	154	65	52	2			
Chhattisgarh	7	2002	1	165	1.95	161	1.9	51921	0.002492	20833803	154	65	52	2	7		
Chhattisgarh	7	2003	0	213	2.47	176	2.04	51921	0.002492	20833803	154	65	52	0	4		
Chhattisgarh	7	2004	0	234	2.67	228	2.6	51921	0.002492	20833803	154	65	52	5	7		
Chhattisgarh	7	2005	0	507	5.67	497	5.56	51921	0.002492	20833803	154	65	52	2	7		
Chhattisgarh	7	2006	0	331	3.64	294	3.23	51921	0.002492	20833803	154	65	52	2	9		
Chhattisgarh	7	2007	0	482	5.2	480	5.18	51921	0.002492	20833803	154	65	52	3.5	7.5		
Chhattisgarh	7	2008	0	497	5.27	493	5.2	51921	0.002492	20833803	154	65	52	4.5	10		
Chhattisgarh	7	2009	0	519	5.41	518	5.4	51921	0.002492	20833803	154	65	52	1.5	9.5		
Chhattisgarh	7	2010				251	2.66									188.72	62.28
Dadra & Nagar Haveli	8	1999								220490	449	60	43	6			
Dadra & Nagar Haveli	8	2000	0	1	1.44	1	1.44			220490	449	60	43	3			
Dadra & Nagar Haveli	8	2001	0	1	1.14	1	1.14			220490	449	60	43	2			
Dadra & Nagar Haveli	8	2002	0	1	1.11	1	1.11			220490	449	60	43	2	7		
Dadra & Nagar Haveli	8	2003	0	0	0	0	0			220490	449	60	43	0	4		
Dadra & Nagar Haveli	8	2004	0	1	0.95	1	0.95			220490	449	60	43	6	8		
Dadra & Nagar Haveli	8	2005	0	1	0.91	1	0.91			220490	449	60	43	4	10		
Dadra & Nagar Haveli	8	2006	0	3	2.61	3	2.61			220490	449	60	43	4	14		
Dadra & Nagar Haveli	8	2007	0	3	2.61	3	2.61			220490	449	60	43	3.5	11.5		
Dadra & Nagar Haveli	8	2008	0	1	0.87	1	0.87			220490	449	60	43	3.5	11		
Dadra & Nagar Haveli	8	2009	0	5	4.31	5	4.31			220490	449	60	43	1.5	8.5		
Dadra & Nagar Haveli	8	2010				3	2.11									2.84	0.15
Daman & Diu	9	1999								158204	1413	81	70	6			

Daman & Diu	9	2000	0	1	1.99	1	1.99			158204	1413	81	70	3				
Daman & Diu	9	2001	0	2	3.13	2	3.13			158204	1413	81	70	2				
Daman & Diu	9	2002	0	1	1.54	1	1.54			158204	1413	81	70	2		7		
Daman & Diu	9	2003	0	3	4.41	3	4.41			158204	1413	81	70	0		4		
Daman & Diu	9	2004	0	0	0	0	0			158204	1413	81	70	6		8		
Daman & Diu	9	2005	0	1	1.25	1	1.25			158204	1413	81	70	4		10		
Daman & Diu	9	2006	0	2	2.33	1	1.16			158204	1413	81	70	4		14		
Daman & Diu	9	2007	0	4	4.4	4	4.4			158204	1413	81	70	3.5		11.5		
Daman & Diu	9	2008	0	1	1.03	1	1.03			158204	1413	81	70	3.5		11		
Daman & Diu	9	2009	0	3	2.91	3	2.91			158204	1413	81	70	1.5		8.5		
Daman & Diu	9	2010				6	5.36										2.2	4
Delhi	10	1999						105385	0.0076087	13850507	9340	82	75	6				
Delhi	10	2000	3	110	2.17	98	1.93	105385	0.0076087	13850507	9340	82	75	3				
Delhi	10	2001	3	104	1.89	94	1.71	105385	0.0076087	13850507	9340	82	75	3				
Delhi	10	2002	24	121	2.1	88	1.53	105385	0.0076087	13850507	9340	82	75	2		8		
Delhi	10	2003	3	97	1.61	84	1.39	105385	0.0076087	13850507	9340	82	75	0		5		
Delhi	10	2004	2	114	1.81	112	1.77	105385	0.0076087	13850507	9340	82	75	6		8		
Delhi	10	2005	1	167	2.53	165	2.5	105385	0.0076087	13850507	9340	82	75	8		14		
Delhi	10	2006	6	219	3.17	177	2.56	105385	0.0076087	13850507	9340	82	75	6.5		20.5		
Delhi	10	2007	2	265	3.66	261	3.61	105385	0.0076087	13850507	9340	82	75	9.5		24		
Delhi	10	2008	5	264	3.49	257	3.4	105385	0.0076087	13850507	9340	82	75	9.5		25.5		
Delhi	10	2009	4	311	4.42	305	4.33	105385	0.0076087	13850507	9340	82	75	9.5		28.5		
Delhi	10	2010				647	7.85										164.84	482.16
Goa	11	1999						12400	0.009201	1347668	364	82	76	4				
Goa	11	2000	0	19	3.29	18	3.12	12400	0.009201	1347668	364	82	76	2				
Goa	11	2001	0	7	1.58	7	1.58	12400	0.009201	1347668	364	82	76	2				
Goa	11	2002	0	5	1.12	5	1.12	12400	0.009201	1347668	364	82	76	2		6		
Goa	11	2003	0	7	1.55	7	1.55	12400	0.009201	1347668	364	82	76	0		4		
Goa	11	2004	0	10	2.16	10	2.16	12400	0.009201	1347668	364	82	76	5		7		
Goa	11	2005	0	15	3.21	15	3.21	12400	0.009201	1347668	364	82	76	2		7		
Goa	11	2006	0	8	1.68	7	1.47	12400	0.009201	1347668	364	82	76	2		9		
Goa	11	2007	0	32	6.67	32	6.67	12400	0.009201	1347668	364	82	76	2		6		
Goa	11	2008	0	23	4.74	23	4.74	12400	0.009201	1347668	364	82	76	3.5		7.5		
Goa	11	2009	0	13	2.63	13	2.63	12400	0.009201	1347668	364	82	76	1.5		7		
goa	11	2010				23	5.88										7.8	15
Gujarat	12	1999						216651	0.0042756	50671017	258	70	59	6				
Gujarat	12	2000	2	313	1.83	286	1.67	216651	0.0042756	50671017	258	70	59	3				
Gujarat	12	2001	1	306	1.51	298	1.47	216651	0.0042756	50671017	258	70	59	2.5				
Gujarat	12	2002	24	348	1.7	310	1.51	216651	0.0042756	50671017	258	70	59	2		7.5		
Gujarat	12	2003	3	378	1.8	323	1.54	216651	0.0042756	50671017	258	70	59	0		4.5		
Gujarat	12	2004	0	432	1.97	431	1.97	216651	0.0042756	50671017	258	70	59	6		8		
Gujarat	12	2005	1	565	2.53	557	2.49	216651	0.0042756	50671017	258	70	59	3		9		
Gujarat	12	2006	4	563	2.49	513	2.27	216651	0.0042756	50671017	258	70	59	4		13		

Gujarat	12	2007	1	844	4.2	838	4.17	216651	0.0042756	50671017	258	70	59	4.5	11.5		
Gujarat	12	2008	0	699	3.4	698	3.4	216651	0.0042756	50671017	258	70	59	3.5	12		
Gujarat	12	2009	0	793	3.78	792	3.77	216651	0.0042756	50671017	258	70	59	1.5	9.5		
Gujarat	12	2010				973	4.44									438.28	534.72
Haryana	13	1999						106385	0.005031	21144564	478	69	56	4			
Haryana	13	2000	4	194	2.46	176	2.23	106385	0.005031	21144564	478	69	56	3			
Haryana	13	2001	5	220	2.64	206	2.47	106385	0.005031	21144564	478	69	56	2			
Haryana	13	2002	37	273	3.18	218	2.54	106385	0.005031	21144564	478	69	56	2	7		
Haryana	13	2003	3	247	2.8	223	2.53	106385	0.005031	21144564	478	69	56	0	4		
Haryana	13	2004	2	315	3.43	309	3.41	106385	0.005031	21144564	478	69	56	6	8		
Haryana	13	2005	1	423	4.55	417	4.49	106385	0.005031	21144564	478	69	56	5	11		
Haryana	13	2006	18	439	4.57	362	3.76	106385	0.005031	21144564	478	69	56	5.25	16.25		
Haryana	13	2007	6	554	5.61	538	5.44	106385	0.005031	21144564	478	69	56	5.5	15.75		
Haryana	13	2008	2	568	5.59	559	5.5	106385	0.005031	21144564	478	69	56	7.25	18		
Haryana	13	2009	4	680	6.91	669	6.8	106385	0.005031	21144564	478	69	56	5.5	18.25		
Haryana	13	2010				883	8.68									203.68	679.32
Himachal Pradesh	14	1999						25435	0.004184	6077900	109	77	68	4			
Himachal Pradesh	14	2000	0	59	2.44	58	2.4	25435	0.004184	6077900	109	77	68	2			
Himachal Pradesh	14	2001	0	44	1.86	44	1.86	25435	0.004184	6077900	109	77	68	2			
Himachal Pradesh	14	2002	0	37	1.52	37	1.52	25435	0.004184	6077900	109	77	68	2	6		
Himachal Pradesh	14	2003	0	30	1.22	27	1.1	25435	0.004184	6077900	109	77	68	0	4		
Himachal Pradesh	14	2004	0	48	1.92	48	1.92	25435	0.004184	6077900	109	77	68	5	7		
Himachal Pradesh	14	2005	0	48	1.89	46	1.8	25435	0.004184	6077900	109	77	68	2	7		
Himachal Pradesh	14	2006	1	61	2.36	51	1.97	25435	0.004184	6077900	109	77	68	3	10		
Himachal Pradesh	14	2007	0	95	3.6	95	3.61	25435	0.004184	6077900	109	77	68	2	7		
Himachal Pradesh	14	2008	0	91	3.4	90	3.36	25435	0.004184	6077900	109	77	68	3.5	8.5		
Himachal Pradesh	14	2009	1	103	4.77	102	4.72	25435	0.004184	6077900	109	77	68	1.5	7		
Himachal Pradesh	14	2010				132	5.91									44.67	87.33
Jammu & Kashmir	15	1999						24265	0.00239212	10143700	46	54	41	4			
Jammu & Kashmir	15	2000	0	80	2.21	79	2.18	24265	0.00239212	10143700	46	54	41	2			
Jammu & Kashmir	15	2001	0	109	2.88	107	2.82	24265	0.00239212	10143700	46	54	41	2			
Jammu & Kashmir	15	2002	1	77	1.85	76	1.82	24265	0.00239212	10143700	46	54	41	2	6		
Jammu & Kashmir	15	2003	0	84	1.99	82	1.95	24265	0.00239212	10143700	46	54	41	0	4		
Jammu & Kashmir	15	2004	0	90	2.09	90	2.09	24265	0.00239212	10143700	46	54	41	5	7		
Jammu & Kashmir	15	2005	0	107	2.39	107	2.39	24265	0.00239212	10143700	46	54	41	2	7		
Jammu & Kashmir	15	2006	1	146	3.2	140	3.07	24265	0.00239212	10143700	46	54	41	2	9		
Jammu & Kashmir	15	2007	0	174	3.73	174	3.73	24265	0.00239212	10143700	46	54	41	2	6		
Jammu & Kashmir	15	2008	0	140	2.93	140	2.93	24265	0.00239212	10143700	46	54	41	3.5	7.5		
Jammu & Kashmir	15	2009	0	178	3.59	178	3.59	24265	0.00239212	10143700	46	54	41	1.5	7		
Jammu & Kashmir	15	2010				232	4.4									105.4	127
Jharkhand	16	1999						62950	0.0023361	26945829	338	54	39	6			
Jharkhand	16	2000	0	0	0	0	0	62950	0.0023361	26945829	338	54	39	4			

Jharkhand	16	2001	2	241	1.99	221	1.82	62950	0.0023361	26945829	338	54	39	2.5			
Jharkhand	16	2002	12	281	2.62	252	2.35	62950	0.0023361	26945829	338	54	39	2	8.5		
Jharkhand	16	2003	0	214	1.86	189	1.64	62950	0.0023361	26945829	338	54	39	0	4.5		
Jharkhand	16	2004	0	395	2.48	386	3.4	62950	0.0023361	26945829	338	54	39	6	8		
Jharkhand	16	2005	2	917	7.77	893	7.56	62950	0.0023361	26945829	338	54	39	4	10		
Jharkhand	16	2006	1	912	7.55	835	6.92	62950	0.0023361	26945829	338	54	39	4	14		
Jharkhand	16	2007	0	1368	11.1	1357	11.1	62950	0.0023361	26945829	338	54	39	4.5	12.5		
Jharkhand	16	2008	0	1532	12.07	1522	12	62950	0.0023361	26945829	338	54	39	3.5	12		
Jharkhand	16	2009	2	1493	11.38	1485	11.32	62950	0.0023361	26945829	338	54	39	1.5	9.5		
Jharkhand	16	2010				1385	10.3									268.9	1116
Karnataka	17	1999						170741	0.00323	52850562	276	67	57	4			
Karnataka	17	2000	8	317	1.7	283	1.52	170741	0.00323	52850562	276	67	57	2			
Karnataka	17	2001	0	339	1.65	331	1.61	170741	0.00323	52850562	276	67	57	2.5			
Karnataka	17	2002	0	318	1.52	315	1.5	170741	0.00323	52850562	276	67	57	2	6.5		
Karnataka	17	2003	34	426	2.03	343	1.63	170741	0.00323	52850562	276	67	57	3	7.5		
Karnataka	17	2004	1	503	2.32	497	2.29	170741	0.00323	52850562	276	67	57	6	11		
Karnataka	17	2005	0	742	3.36	736	3.33	170741	0.00323	52850562	276	67	57	2	11		
Karnataka	17	2006	0	595	2.62	536	2.36	170741	0.00323	52850562	276	67	57	3	11		
Karnataka	17	2007	1	811	3.56	810	3.55	170741	0.00323	52850562	276	67	57	2.75	7.75		
Karnataka	17	2008	0	751	4.01	750	4.01	170741	0.00323	52850562	276	67	57	3.5	9.25		
Karnataka	17	2009	0	773	4.27	773	4.27	170741	0.00323	52850562	276	67	57	1.5	7.75		
Karnataka	17	2010				841	4.33									388.4	452.6
Kerala	18	1999						118998	0.003737	31841374	819	91	88	4			
Kerala	18	2000	1	96	1.02	93	0.99	118998	0.003737	31841374	819	91	88	2			
Kerala	18	2001	0	123	1.29	118	1.24	118998	0.003737	31841374	819	91	88	2			
Kerala	18	2002	0	142	1.55	142	1.55	118998	0.003737	31841374	819	91	88	2	6		
Kerala	18	2003	0	117	1.28	111	1.22	118998	0.003737	31841374	819	91	88	0	4		
Kerala	18	2004	0	206	2.26	206	2.26	118998	0.003737	31841374	819	91	88	5	7		
Kerala	18	2005	0	218	2.3	217	2.29	118998	0.003737	31841374	819	91	88	2	7		
Kerala	18	2006	0	226	2.36	206	2.15	118998	0.003737	31841374	819	91	88	2	9		
Kerala	18	2007	0	229	2.28	229	2.28	118998	0.003737	31841374	819	91	88	2	6		
Kerala	18	2008	0	292	2.88	292	2.88	118998	0.003737	31841374	819	91	88	3.5	7.5		
Kerala	18	2009	0	326	3.83	326	3.83	118998	0.003737	31841374	819	91	88	1.5	7		
Kerala	18	2010				356	3.86									184.4	171.6
Lakshadweep	19	1999								60650	1895	88	82	4			
Lakshadweep	19	2000	0	0	0	0	0			60650	1895	88	82	2			
Lakshadweep	19	2001	0	0	0	0	0			60650	1895	88	82	2			
Lakshadweep	19	2002	0	1	4.55	1	4.55			60650	1895	88	82	2	6		
Lakshadweep	19	2003	0	0	0	0	0			60650	1895	88	82	0	4		
Lakshadweep	19	2004	0	1	4.55	1	4.55			60650	1895	88	82	5	7		
Lakshadweep	19	2005	0	1	4.17	1	4.17			60650	1895	88	82	2	7		
Lakshadweep	19	2006	0	0	0	0	0			60650	1895	88	82	2	9		
Lakshadweep	19	2007	0	1	4.17	1	4.17			60650	1895	88	82	2	6		

Lakshadweep	19	2008	0	0	0	0	0		60650	1895	88	82	3.5	7.5		
Lakshadweep	19	2009	0	0	0	0	0		60650	1895	88	82	1.5	7		
Lakshadweep	19	2010				0	0								0	0
Madhya Pradesh	20	1999						116322	0.001927	60348023	196	64	50	6		
Madhya Pradesh	20	2000	2	634	2.01	608	1.93	116322	0.001927	60348023	196	64	50	3		
Madhya Pradesh	20	2001	0	383	1.59	365	1.51	116322	0.001927	60348023	196	64	50	2.5		
Madhya Pradesh	20	2002	21	497	2.02	452	1.84	116322	0.001927	60348023	196	64	50	2	7.5	
Madhya Pradesh	20	2003	11	532	2.1	436	1.72	116322	0.001927	60348023	196	64	50	2	6.5	
Madhya Pradesh	20	2004	0	772	2.98	747	2.88	116322	0.001927	60348023	196	64	50	6	10	
Madhya Pradesh	20	2005	0	1141	4.3	1127	4.25	116322	0.001927	60348023	196	64	50	4.66	12.66	
Madhya Pradesh	20	2006	3	1273	4.69	1071	3.95	116322	0.001927	60348023	196	64	50	6.33	16.99	
Madhya Pradesh	20	2007	0	2145	7.74	2135	7.7	116322	0.001927	60348023	196	64	50	5.125	16.115	
Madhya Pradesh	20	2008	1	2284	7.9	2274	7.86	116322	0.001927	60348023	196	64	50	6.5	17.955	
Madhya Pradesh	20	2009	0	2722	9.41	2719	9.4	116322	0.001927	60348023	196	64	50	3.5	15.125	
Madhya Pradesh	20	2010				2367	8.75									541 1826
Maharashtra	21	1999						432413	0.004463	96878627	315	77	68	4		
Maharashtra	21	2000	7	598	1.84	562	1.73	432413	0.004463	96878627	315	77	68	2		
Maharashtra	21	2001	4	601	1.8	579	1.73	432413	0.004463	96878627	315	77	68	2.5		
Maharashtra	21	2002	6	592	1.73	571	1.67	432413	0.004463	96878627	315	77	68	3	7.5	
Maharashtra	21	2003	3	710	2.04	634	1.82	432413	0.004463	96878627	315	77	68	2.5	8	
Maharashtra	21	2004	3	818	2.3	808	2.28	432413	0.004463	96878627	315	77	68	5	10.5	
Maharashtra	21	2005	0	1205	3.34	1200	3.33	432413	0.004463	96878627	315	77	68	4.66	12.16	
Maharashtra	21	2006	5	1294	3.53	1119	3.05	432413	0.004463	96878627	315	77	68	5.25	14.91	
Maharashtra	21	2007	2	1881	5.05	1873	5.03	432413	0.004463	96878627	315	77	68	5	14.91	
Maharashtra	21	2008	2	1915	5.05	1908	5.05	432413	0.004463	96878627	315	77	68	5.5	15.75	
Maharashtra	21	2009	0	2255	5.86	2255	5.86	432413	0.004463	96878627	315	77	68	5.5	16	
Maharashtra	21	2010				2586	6.65									777.7 1808.3
Manipur	22	1999						5714	0.002637	2166788	97	69	60	4		
Manipur	22	2000	0	16	1.76	14	1.54	5714	0.002637	2166788	97	69	60	2		
Manipur	22	2001	0	14	1.37	14	1.37	5714	0.002637	2166788	97	69	60	2		
Manipur	22	2002	0	9	0.95	9	0.95	5714	0.002637	2166788	97	69	60	2	6	
Manipur	22	2003	0	8	0.84	7	0.74	5714	0.002637	2166788	97	69	60	0	4	
Manipur	22	2004	0	12	1.22	12	1.22	5714	0.002637	2166788	97	69	60	5	7	
Manipur	22	2005	0	19	1.97	19	1.97	5714	0.002637	2166788	97	69	60	2	7	
Manipur	22	2006	0	14	1.42	12	1.22	5714	0.002637	2166788	97	69	60	2	9	
Manipur	22	2007	0	22	2.21	22	2.21	5714	0.002637	2166788	97	69	60	2	6	
Manipur	22	2008	0	24	2.39	24	2.39	5714	0.002637	2166788	97	69	60	3.5	7.5	
Manipur	22	2009	0	21	2.05	21	2.05	5714	0.002637	2166788	97	69	60	1.5	7	
Manipur	22	2010				18	1.7									21.1 na
Meghalaya	23	1999						6470	0.00279	2318822	103	63	60	4		
Meghalaya	23	2000	0	9	1.02	7	0.79	6470	0.00279	2318822	103	63	60	2		
Meghalaya	23	2001	0	18	1.97	18	1.97	6470	0.00279	2318822	103	63	60	2		
Meghalaya	23	2002	0	14	1.48	14	1.48	6470	0.00279	2318822	103	63	60	2	6	

Meghalaya	23	2003	0	11	1.07	10	0.97	6470	0.00279	2318822	103	63	60	2	6		
Meghalaya	23	2004	0	17	1.69	17	1.69	6470	0.00279	2318822	103	63	60	5	9		
Meghalaya	23	2005	0	24	2.09	24	2.09	6470	0.00279	2318822	103	63	60	2	9		
Meghalaya	23	2006	0	21	2.03	20	1.93	6470	0.00279	2318822	103	63	60	2	9		
Meghalaya	23	2007	0	42	3.94	42	3.94	6470	0.00279	2318822	103	63	60	2	6		
Meghalaya	23	2008	0	38	3.51	38	3.51	6470	0.00279	2318822	103	63	60	3.5	7.5		
Meghalaya	23	2009	0	33	2.96	33	2.96	6470	0.00279	2318822	103	63	60	1.5	7		
Meghalaya	23	2010				29	2.41									24	5
Mizoram	24	1999						2697	0.003035	888573	42	88	86	2			
Mizoram	24	2000	0	11	3.19	11	3.19	2697	0.003035	888573	42	88	86	2			
Mizoram	24	2001	0	4	1.14	4	1.14	2697	0.003035	888573	42	88	86	2			
Mizoram	24	2002	0	4	1.2	4	1.2	2697	0.003035	888573	42	88	86	2	6		
Mizoram	24	2003	0	2	0.59	2	0.59	2697	0.003035	888573	42	88	86	0	4		
Mizoram	24	2004	0	0	0	0	0	2697	0.003035	888573	42	88	86	5	7		
Mizoram	24	2005	0	6	1.74	6	1.74	2697	0.003035	888573	42	88	86	2	7		
Mizoram	24	2006	0	8	2.28	6	1.71	2697	0.003035	888573	42	88	86	2	9		
Mizoram	24	2007	0	14	3.8	14	3.8	2697	0.003035	888573	42	88	86	2	6		
Mizoram	24	2008	0	7	1.74	7	1.74	2697	0.003035	888573	42	88	86	3.5	7.5		
Mizoram	24	2009	0	8	1.94	8	1.94	2697	0.003035	888573	42	88	86	1.5	7		
Mizoram	24	2010				5	1.17									8.5	na
Nagaland	25	1999						5346	0.00268638	1990036	120	67	62	2			
Nagaland	25	2000	0	8	1.31	8	1.31	5346	0.00268638	1990036	120	67	62	2			
Nagaland	25	2001	0	6	0.75	6	0.75	5346	0.00268638	1990036	120	67	62	2			
Nagaland	25	2002	0	2	0.26	2	0.26	5346	0.00268638	1990036	120	67	62	2	6		
Nagaland	25	2003	0	1	0.12	1	0.12	5346	0.00268638	1990036	120	67	62	0	4		
Nagaland	25	2004	0	3	0.34	3	0.34	5346	0.00268638	1990036	120	67	62	5	7		
Nagaland	25	2005	0	11	1.23	11	1.23	5346	0.00268638	1990036	120	67	62	2	7		
Nagaland	25	2006	0	4	0.4	4	0.4	5346	0.00268638	1990036	120	67	62	2	9		
Nagaland	25	2007	0	23	2.21	23	2.21	5346	0.00268638	1990036	120	67	62	2	6		
Nagaland	25	2008	0	18	1.64	18	1.64	5346	0.00268638	1990036	120	67	62	3.5	7.5		
Nagaland	25	2009	0	27	2.33	27	2.33	5346	0.00268638	1990036	120	67	62	1.5	7		
Nagaland	25	2010				32	3.904									16.4	16
Orissa	26	1999						78536	0.002133860	36804660	236	64	51	3			
Orissa	26	2000	0	273	2.1	259	1.99	78536	0.002133860	36804660	236	64	51	2			
Orissa	26	2001	0	312	2.14	304	2.09	78536	0.002133860	36804660	236	64	51	2			
Orissa	26	2002	4	267	1.83	262	1.8	78536	0.002133860	36804660	236	64	51	2	6		
Orissa	26	2003	2	265	1.82	240	1.65	78536	0.002133860	36804660	236	64	51	2	6		
Orissa	26	2004	0	284	1.9	278	1.85	78536	0.002133860	36804660	236	64	51	5	9		
Orissa	26	2005	0	679	4.34	677	4.33	78536	0.002133860	36804660	236	64	51	2	9		
Orissa	26	2006	0	850	5.35	730	4.59	78536	0.002133860	36804660	236	64	51	2	9		
Orissa	26	2007	1	1023	6.41	1017	6.37	78536	0.002133860	36804660	236	64	51	4.5	8.5		
Orissa	26	2008	2	1227	7.59	1216	7.52	78536	0.002133860	36804660	236	64	51	4.5	11		
Orissa	26	2009	0	1481	10.91	1473	10.85	78536	0.002133860	36804660	236	64	51	1.5	10.5		

Sikkim	30	2005	0	2	0.82	2	0.82	1803	0.00333363	540851	76	70	61	2	7		
Sikkim	30	2006	0	2	0.79	1	0.4	1803	0.00333363	540851	76	70	61	2	9		
Sikkim	30	2007	0	6	2.31	6	2.31	1803	0.00333363	540851	76	70	61	2	6		
Sikkim	30	2008	0	5	2.08	5	2.08	1803	0.00333363	540851	76	70	61	3.5	7.5		
Sikkim	30	2009	0	3	1.22	3	1.22	1803	0.00333363	540851	76	70	61	1.5	7		
Sikkim	30	2010				8	3.05									5.24	3
Tamil Nadu	31	1999						223528	0.00358185	62405679	480	73	65	2			
Tamil Nadu	31	2000	0	292	1.55	275	1.46	223528	0.00358185	62405679	480	73	65	2			
Tamil Nadu	31	2001	0	302	1.57	294	1.53	223528	0.00358185	62405679	480	73	65	2			
Tamil Nadu	31	2002	0	287	1.55	286	1.54	223528	0.00358185	62405679	480	73	65	2	6		
Tamil Nadu	31	2003	2	310	1.66	267	1.43	223528	0.00358185	62405679	480	73	65	0	4		
Tamil Nadu	31	2004	1	398	2.1	395	2.09	223528	0.00358185	62405679	480	73	65	5	7		
Tamil Nadu	31	2005	0	539	3.05	537	3.04	223528	0.00358185	62405679	480	73	65	2	7		
Tamil Nadu	31	2006	0	423	2.37	376	2.11	223528	0.00358185	62405679	480	73	65	2	9		
Tamil Nadu	31	2007	0	545	3.02	544	3.02	223528	0.00358185	62405679	480	73	65	2	6		
Tamil Nadu	31	2008	0	557	3.06	557	3.06	223528	0.00358185	62405679	480	73	65	3.5	7.5		
Tamil Nadu	31	2009	0	604	3.28	604	3.28	223528	0.00358185	62405679	480	73	65	1.5	7		
Tamil Nadu	31	2010				586	3.54									331	255
Tripura	32	1999						9124	0.00285196	3199203	305	74	65	2			
Tripura	32	2000	0	19	1.39	18	1.31	9124	0.00285196	3199203	305	74	65	2			
Tripura	32	2001	0	20	1.57	20	1.57	9124	0.00285196	3199203	305	74	65	2			
Tripura	32	2002	0	15	1.16	15	1.16	9124	0.00285196	3199203	305	74	65	2	6		
Tripura	32	2003	0	8	0.61	6	0.46	9124	0.00285196	3199203	305	74	65	0	4		
Tripura	32	2004	0	21	1.58	52	4.83	9124	0.00285196	3199203	305	74	65	5	7		
Tripura	32	2005	2	54	5.01	52	4.83	9124	0.00285196	3199203	305	74	65	2	7		
Tripura	32	2006	0	53	4.85	41	3.75	9124	0.00285196	3199203	305	74	65	4	11		
Tripura	32	2007	0	79	5.84	79	5.84	9124	0.00285196	3199203	305	74	65	2	8		
Tripura	32	2008	0	60	4.37	60	4.37	9124	0.00285196	3199203	305	74	65	3.5	9.5		
Tripura	32	2009	0	60	4.22	60	4.22	9124	0.00285196	3199203	305	74	65	1.5	7		
Tripura	32	2010				54	3.64									29.6	24
Uttar Pradesh	33	1999						279762	0.001683306	166197921	690	57	43	4			
Uttar Pradesh	33	2000	178	1847	2.64	1461	2.09	279762	0.001683306	166197921	690	57	43	3			
Uttar Pradesh	33	2001	216	1871	2.82	1478	2.23	279762	0.001683306	166197921	690	57	43	4			
Uttar Pradesh	33	2002	1242	3515	5.18	1845	2.72	279762	0.001683306	166197921	690	57	43	4	11		
Uttar Pradesh	33	2003	83	1971	2.84	1562	2.25	279762	0.001683306	166197921	690	57	43	0	8		
Uttar Pradesh	33	2004	82	4058	5.72	3789	5.34	279762	0.001683306	166197921	690	57	43	6	10		
Uttar Pradesh	33	2005	29	10264	14.14	10055	13.83	279762	0.001683306	166197921	690	57	43	9	15		
Uttar Pradesh	33	2006	519	12192	16.42	10271	13.83	279762	0.001683306	166197921	690	57	43	7.5	22.5		
Uttar Pradesh	33	2007	341	14885	19.59	14343	18.88	279762	0.001683306	166197921	690	57	43	10.5	27		
Uttar Pradesh	33	2008	305	17649	22.71	17108	22.01	279762	0.001683306	166197921	690	57	43	10.5	28.5		
Uttar Pradesh	33	2009	602	18785	23.63	17931	22.56	279762	0.001683306	166197921	690	57	43	8.4	29.4		
Uttar Pradesh	33	2010				22394	24.91									1669.7	19118
Uttarakhand	34	1999						25776	0.00303627	8489349	159	72	60	4			

